



©ENTRI SERIES EH-MU

ENVIRONMENTALLY HARDENED WITH BUILT IN MONITORING & CONTROL

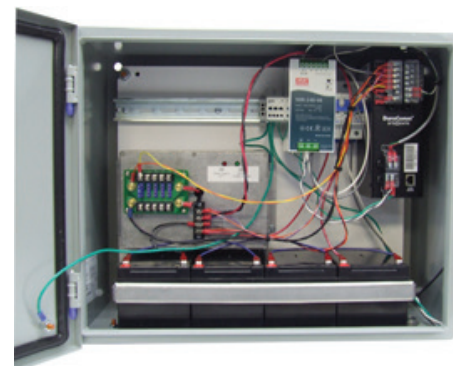
The Centri Series EH-MU integrates our SiteCentri unit into the EH DC UPS system to provide real time remote monitoring and control of your system. In addition to the standard features of our EH-Series the MU adds the following features.

POWER SUPPLY FEATURES

- Alarm notifications by SNMP and email through Ethernet (Optional Form C dry contact output terminals)
 - Power supply fail alarm, additional alarm for N+1 modules if present
 - AC fail alarm
 - Over temperature alarm
 - Battery low voltage disconnect alarm to MU
- Remote Monitoring
 - Output Voltage and Current
 - Battery Voltage
 - Power rectifier Voltage, additional N+1 redundant power rectifier Voltage, if present
 - AC Mains Voltage
 - System Temperature
- Remote Control
 - Power rectifier on/off and N+1 redundant power rectifier on/off, if present
 - Internally hosted webpage, plug-and-play, no additional software required
- Internal data storage via SD card and downloadable .CSV file



*Front of EH-48-5N-MU Shown
18" H x 16" W x 9" D



*Front of EH-48-5N-MU-14Ah Shown

SPECIFICATIONS

| Model Number | Output Current (Amps) | Output Voltage VDC | Input Voltage VAC | DC-OK | Internal Battery |
|-------------------|-----------------------|--------------------|-------------------|-------|------------------|
| EH-12-15N-MU | 14 | 13.8 | 90 to 264 | NO | 12 Volts - 7 Ah |
| EH-24-10N-MU | 10 | 27.5 | 90 to 264 | NO | 24 Volts - 7 Ah |
| EH-48-5N-MU | 5 | 55.2 | 90 to 264 | YES | 48 Volts - 7 Ah |
| EH-12-15N-MU-14Ah | 15 | 13.8 | 90 to 264 | NO | 12 Volts - 14 Ah |
| EH-24-10N-MU-14Ah | 10 | 27.5 | 90 to 264 | NO | 24 Volts - 14 Ah |
| EH-48-5N-MU-14Ah | 5 | 55.2 | 90 to 264 | NO | 48 Volts - 14 Ah |
| EH-48-10N-MU-14Ah | 10 | 55.2 | 90 to 264 | YES | 48 Volts - 14 Ah |

| DC UPS Sizing Chart | Battery Capacity | | AC UPS Sizing Chart | Battery Capacity | |
|-------------------------------|------------------|-----------|---------------------|------------------|-----------|
| | 7Ah | 14Ah | | 7Ah | 14Ah |
| Average Constant Current Draw | 7Ah | 14Ah | Average Power Draw | 7Ah | 14Ah |
| <1 Amps | ~6 hours | ~12 hours | <30 Watts | ~6 hours | ~12 hours |
| 1 to 2.5 Amps | ~3 hours | ~6 hours | 30 to 70 Watts | ~3 hours | ~6 hours |
| 2.5 to 5 Amps | ~1 hour | ~3 hours | 70 to 100 Watts | ~1 hour | ~3 hours |