



A Benny Lee Company

# RMSL SERIES

## RACK MOUNT POWER SUPPLY



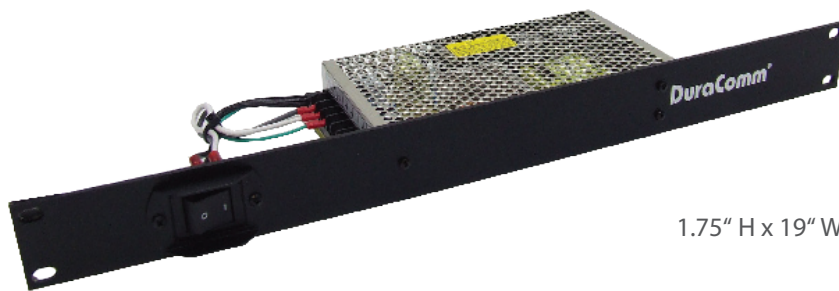
3.5" H x 19" W x 4" D

### FEATURES

- Input voltage 88~132 / 176~264 VAC switch selectable
- Short circuit / Overload / Over Voltage / Over Temperature Protections
- Built-in EMI filter
- Soft start with limiting AC surge current

### SPECIFICATIONS

Model Number	Output Current (Amps)	Output Voltage VDC	Input Voltage VAC	Panel Height	Weight (lbs)	N+1	Meters
RMSL-5012	50	12-15	110 or 220	3.5"	7	NO	NO
RMSL-8012	80	12-15	110 or 220	3.5"	8	NO	NO
RMSL-2524	25	22-29	110 or 220	3.5"	7	NO	NO
RMSL-1248	12	46-56	110 or 220	3.5"	7	NO	NO



1.75" H x 19" W x 4" D

### SPECIFICATIONS

Model Number	Output Current (Amps)	Output Voltage VDC	Input Voltage VAC	Panel Height	Weight (lbs)	N+1	Meters
RMSL-1212	12.5	12-15	110 or 220	1.75"	2.125	NO	NO
RMSL-624	6	24-29	110 or 220	1.75"	2.125	NO	NO
RMSL-348	3	46-54	110 or 220	1.75"	2.125	NO	NO