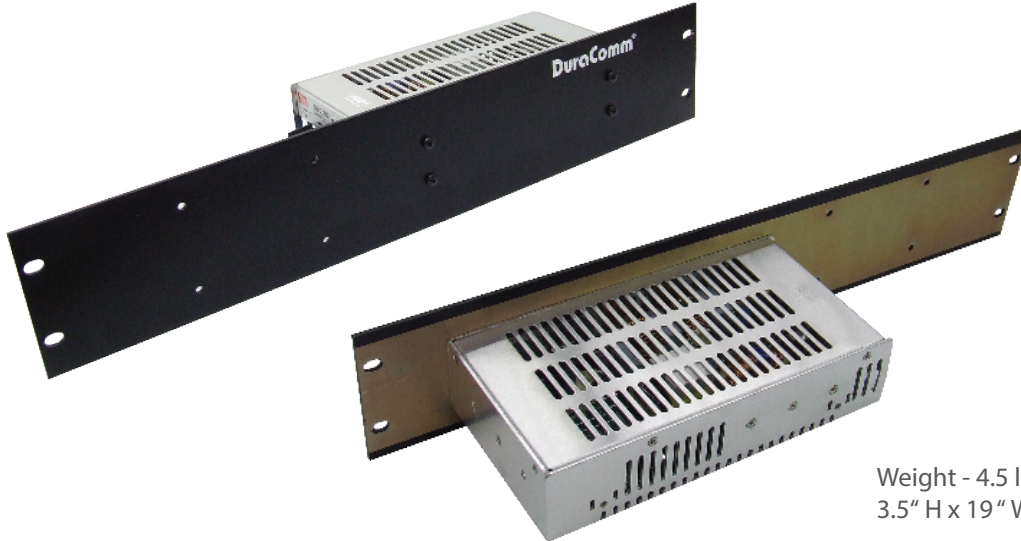




A Benny Lee Company

# DCDC SERIES

200 & 500 WATT ISOLATED DC/DC CONVERTERS



Weight - 4.5 lbs  
3.5" H x 19" W x 5" D

## 200 WATT FEATURES

- 1500 VAC I/O isolation
- Protections: Short circuit / Overload / Over Temperature
- Cooling by free air convection

## 500 WATT FEATURES

- 2000 VAC I/O isolation
- Protections: Short circuit / Overload / Over temperature / Input polarity (by fuse)
- Forced air cooling by built-in DC fan with fan speed control
- Output DC-OK Signal
- Built-in remote On/Off control
- Built-in remote sense function

## SPECIFICATIONS

Model Number	Input Range VDC	Output Voltage VDC	Output Range VDC	Output Current (Amps)	RC & DC OK	Disconnect/Reconnect VDC	Weight (lbs)
DCDC-200-48-12	36-72	12	11-16	16	NO	N/A	4.5
DCDC-500-48-12	19-72	12	11-16	40	NO	N/A	4.5
DCDC-200-48-24	36-72	24	23-30	8.4	NO	N/A	4.5
DCDC-500-48-24	19-72	24	23-30	21	NO	N/A	4.5
DCDC-200-24-48	19-36	48	43-53	4.2	NO	N/A	4.5
DCDC-500-24-48	19-72	48	43-53	10.5	NO	N/A	4.5
DCDC-200-48-48	36-72	48	43-53	4.2	NO	N/A	4.5